



Professor J G Cowpe

Continuing Professional Development - CPD

- the conscious updating of professional knowledge and the improvement of professional competence throughout a person's working life.
- a commitment to being professional, keeping up to date and continuously seeking to improve.
- the key to optimising a person's career opportunities, both today and for the future.

Chartered Institute of Professional Development (2000).



Europe – CPD?



Education, Audiovisual and Culture Executive Agency Lifelong Learning: Erasmus

PROJECT NUMBER – 509961-LLP-1-2010-1-UK-ERASMUS-EMHE
AGREEMENT NUMBER - 2010 - 3317 / 001 - 001

Harmonization & Standardization of European Dental Schools' Programs of Continuing Professional Development for Graduate Dentists

£300K – 2 years duration



Dent CPD - Background

- EU-citizens - wish to be assured that the practicing dentist
 - has a degree or license that meets EU-standards,
 - maintains and up-dates their knowledge and skills through CPD.



Dent CPD - Background

- CPD essential to the maintenance of dentists' knowledge & skills, underpinning safe clinical practice.
- No harmonisation on
 - the 'essential' content or
 - regulation of CPD for graduate dentists in the EU.
- CPD provided by a variety of enterprises, including
 - dental schools in higher education institutions (HEIs),
 - public sector organisations & industry.
- Not all subject to quality management.



Dent CPD - Impact



- **Harmonization** of dental CPD across Europe should:
 - enhance patient safety;
 - promote cooperation between HEIs & professional organizations delivering CPD;
 - promote freedom of movement of graduate dentists through a Europe wide recognition of their CPD, central to the philosophy of lifelong learning.



Dent CPD - Impact



- This project places high on the agenda
 - European Quality Framework (EQF)
 - National Quality Framework (NQF) and thus
 - Framework for Qualifications of the Higher Education Area (FQHEA), by
 - Improving understanding of the educational level of a particular CPD activity.



Education & Training 2010 Work Programme



- Project builds on the 3 common objectives
 - quality, access, openness.
- Clear EU recognised guidelines for CPD delivery and activity enables appropriate monitoring to agreed quality benchmarks - following the philosophy of the EQF

The project addresses in varying degrees all 8 peer learning clusters of countries of the Education & Training 2010 Work Programme:

- Modernisation of higher education through support for Dental Schools in HEIs;
- by providing guidelines for teachers and trainers;
- which promotes better use of resources;
- improving technology in relation to the delivery of modular teaching programmes;
- overall establishing greater access to agreed and certified CPD opportunities;
- covering key or core competences of dental CPD;
- utilising sophisticated ICT;
- with the guidelines matched to recognised learning outcomes.



Dent CPD - Impact



- **Standardization and harmonisation** of CPD facilitates
 - the recognition of each others CPD activities,
 - promoting opportunities for EU graduate dentists to live and work anywhere in the EU,
 - in turn, providing a high quality clinical service for their patients.



Dent CPD - Impact



- This project aims to
 - modernise the strategic role of dental schools in HEIs in the quality management and provision of CPD and
 - develop cooperation between universities and other professional stakeholders in the delivery of CPD.



Dent CPD - Impact



- EU-wide recognition of CPD activities will
 - promote the freedom of movement for all graduate dentists in Europe, which can
 - support systems of revalidation, to the ultimate benefit of patient safety.



Dent CPD - Impact



- Specifically,
 - envisage an **agreement on 'essential' CPD topics** will be **adopted by the regulatory/statutory bodies** within each EU country, and
 - used to **validate the CPD** undertaken by graduate dentists in these essential topics.
 - in turn, provide a currency for use in **recertification processes extending beyond country boundaries.**



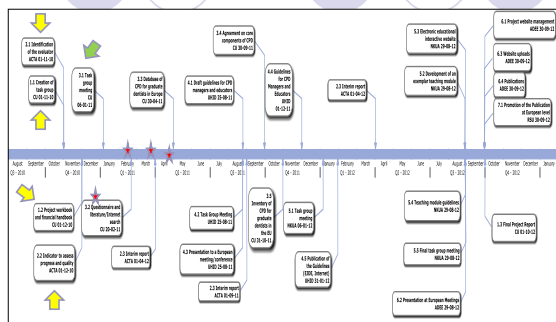
Dent CPD - Impact



- Short term target groups
 - expect the good practice guidelines for program managers to be endorsed by the majority of dental schools and other CPD providers, in Europe, beyond the life of the project.
- Long term target groups
 - providers and users of dental CPD in developing countries
 - African, Asian and South American continents
 - links are already well established through the ADEE.



Timeframes



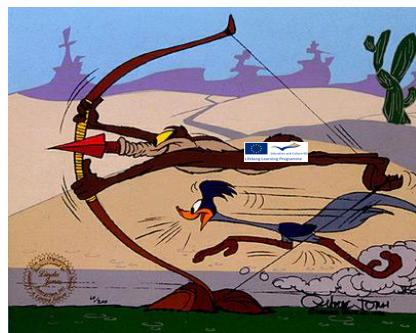
Dent CPD - Outputs



- Inventory by literature & internet search, survey & consensus methods
 - existing CPD programs & providers;
 - agreement on core components; identification of best practice.
- Guidelines - organization, quality management & assurance of CPD programs.
- Guidelines for delivery of competence-based CPD modules & a core topic, exemplar teaching module.
- Dental CPD Reference Manual
- Eur J of Dent Ed, Supplement, publication



Key areas - Management, Dissemination & Quality Assurance



Dent CPD – The Team



- Cardiff University, UK**
Jon Cowpe, Alison Bullock, Jan Davidge, Hannah Thomas, Sarah Bailey, Emma Barnes, Richard Thomas, Suzanne Phillips
- National and Kapodistrian University of Athens, Greece**
Argyro Kavadella, Anastasia Kossioni, Kostas Tsiklakis
- University of Helsinki, Finland**
Terhi Karaharju-Suvalto, Kimmo Suomalainen
- Academic Centre for Dentistry (ACTA), Amsterdam, Netherlands**
Henk Kersten, Eva Povel
- Association for Dental Education in Europe (ADEE), Dublin, Ireland**
Majella Giles, Damien Walmsley
- Rīga Stradiņš University, Latvia**
Una Soboleva, Andra Liepa



There can be new horizons every day

